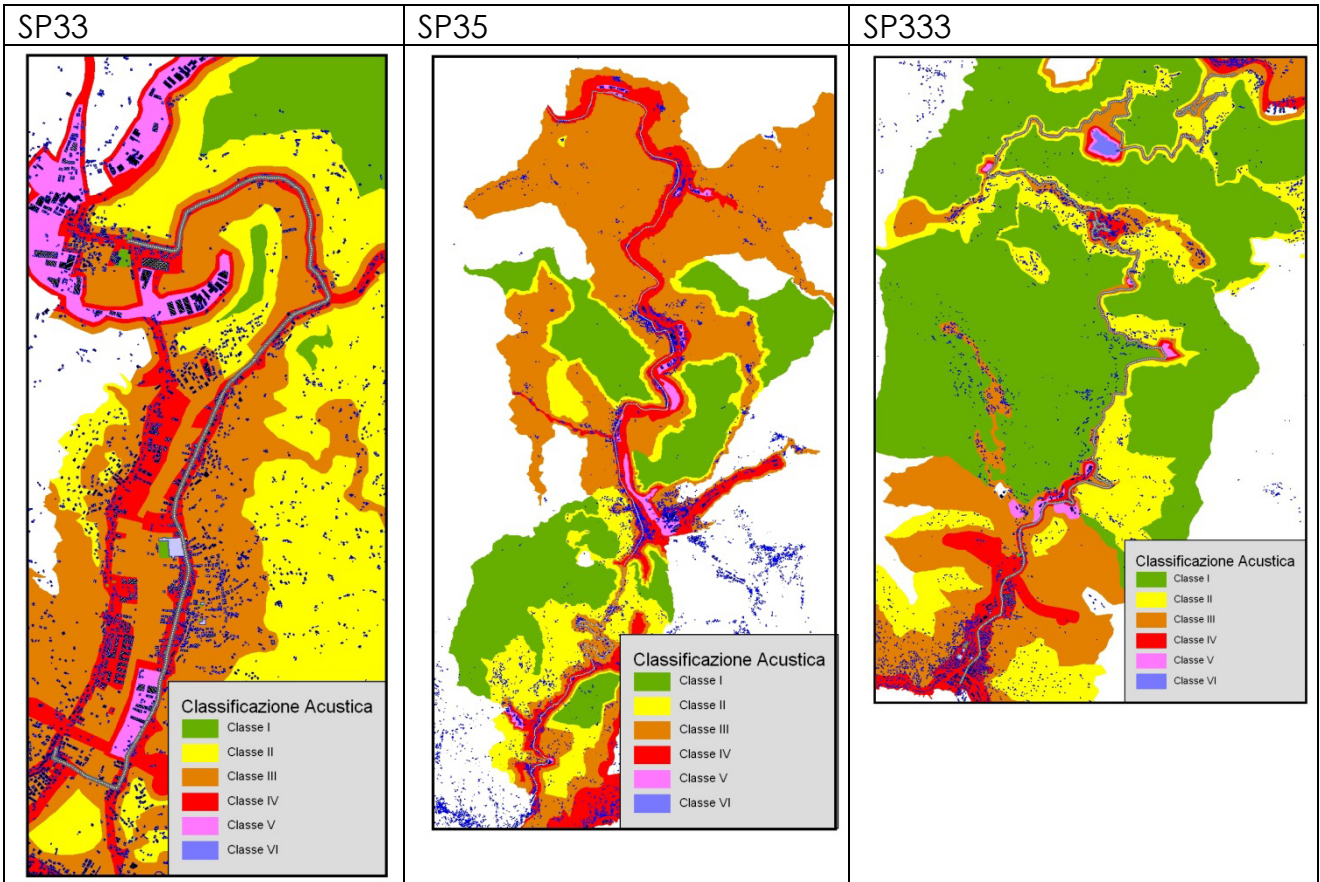
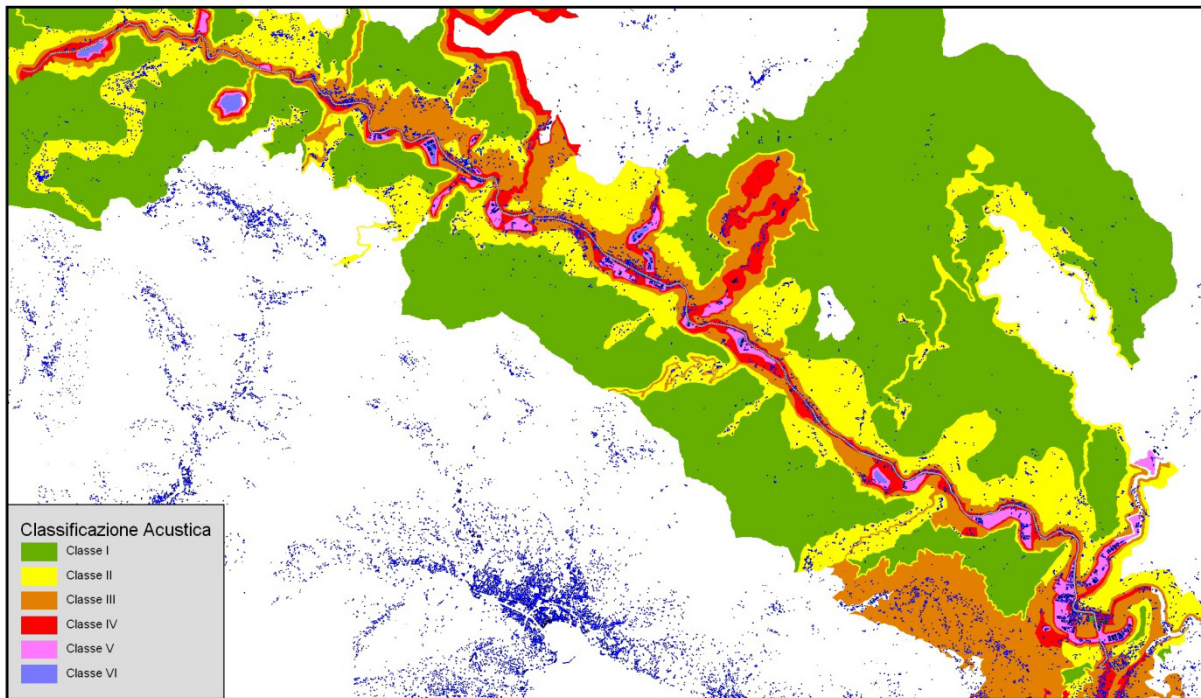


Annex 1: Noise limit maps

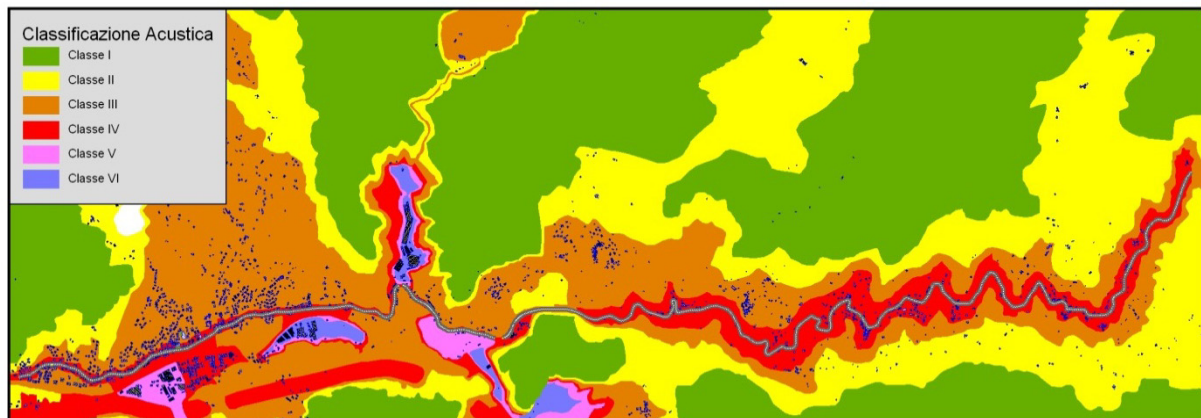
Province of Genova:



SP225

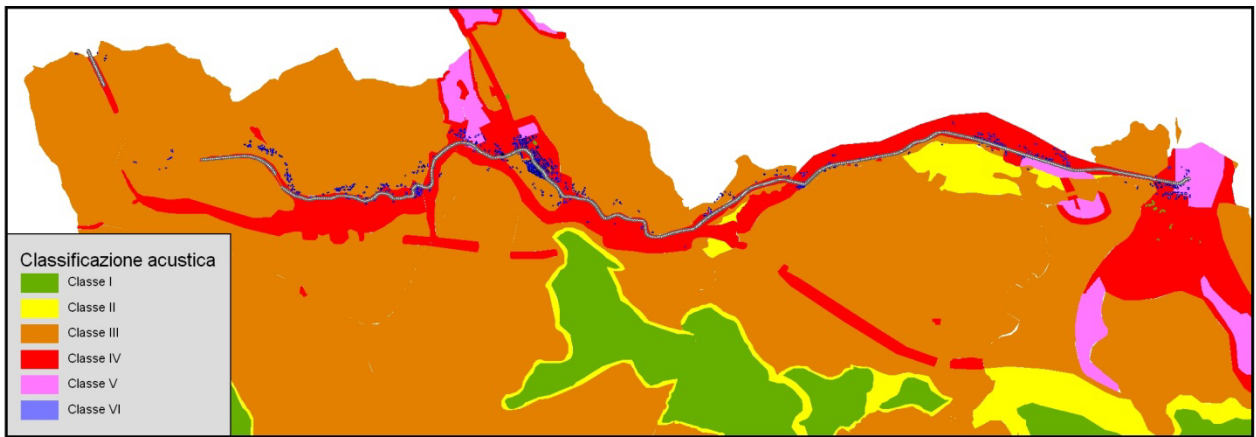


SP523

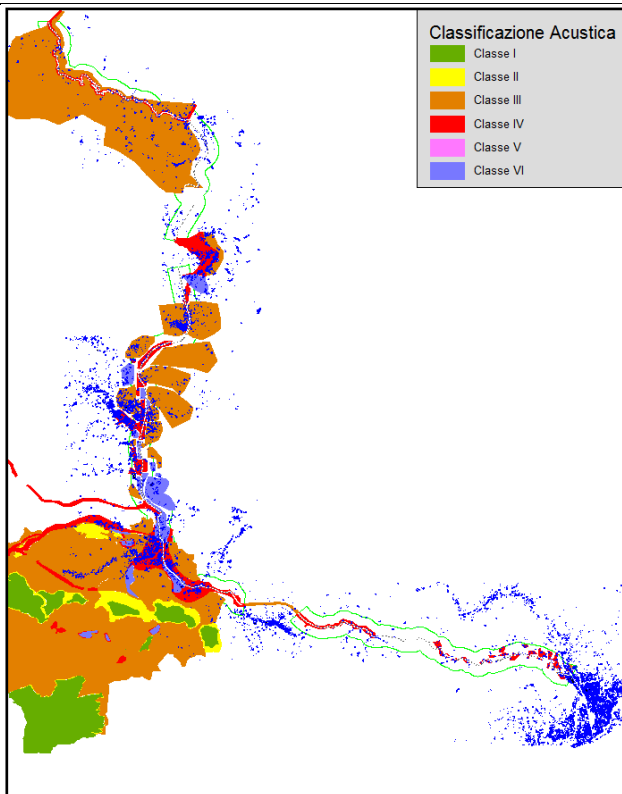


Province of Savona:

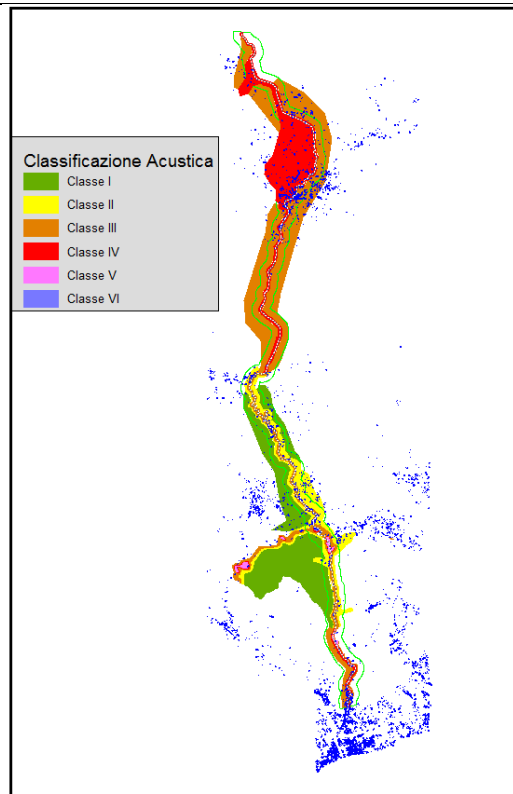
SP 28bis



SP 29¹



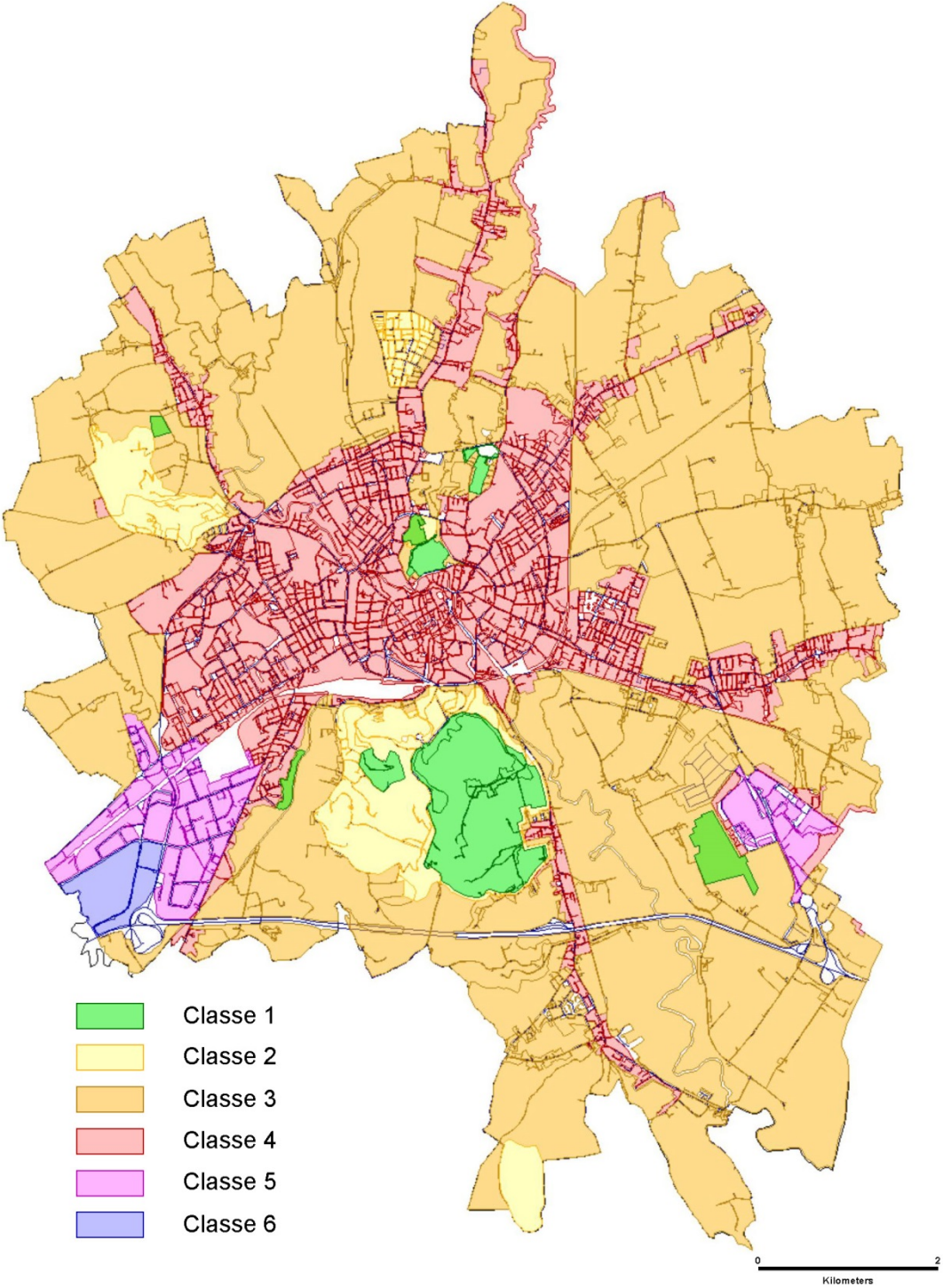
SP334



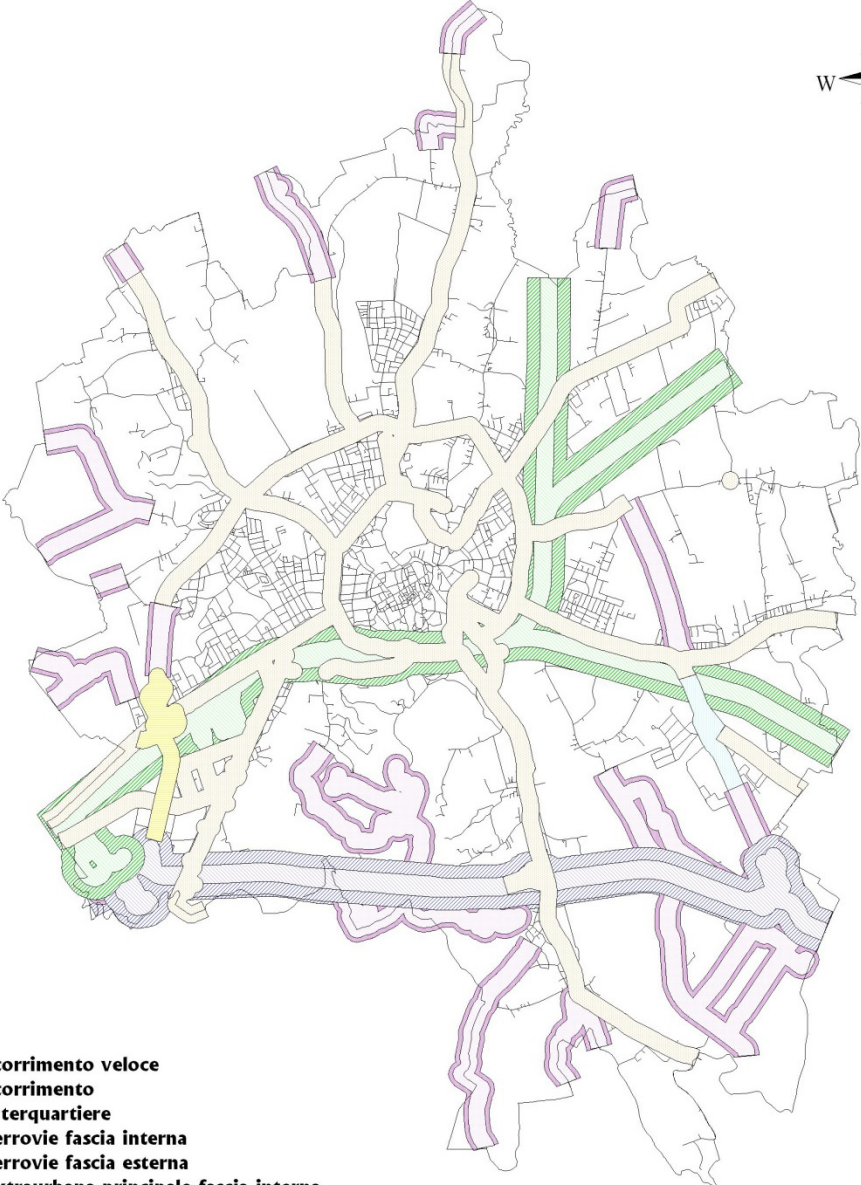
¹ In the southeastern part, the noise limits are available only for buildings, not for the whole area.

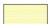



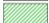






Agglomerate of Vicenza:

Acoustical buffers excluded











Acoustical buffers only



-  Scorrimento veloce
-  Scorrimento
-  Interquartiere
-  Ferrovie fascia interna
-  Ferrovie fascia esterna
-  Extraurbana principale fascia interna
-  Extraurbana principale fascia esterna
-  Extraurbana fascia interna
-  Extraurbana fascia esterna
-  Autostrada fascia interna
-  Autostrada fascia esterna

0  2 Kilometers

Agglomerate of Prato:

-  Classe I
-  Classe II
-  Classe III
-  Classe III - Spettacolo
-  Classe IV
-  Classe IV - Spettacolo
-  Classe V
-  Classe VI

