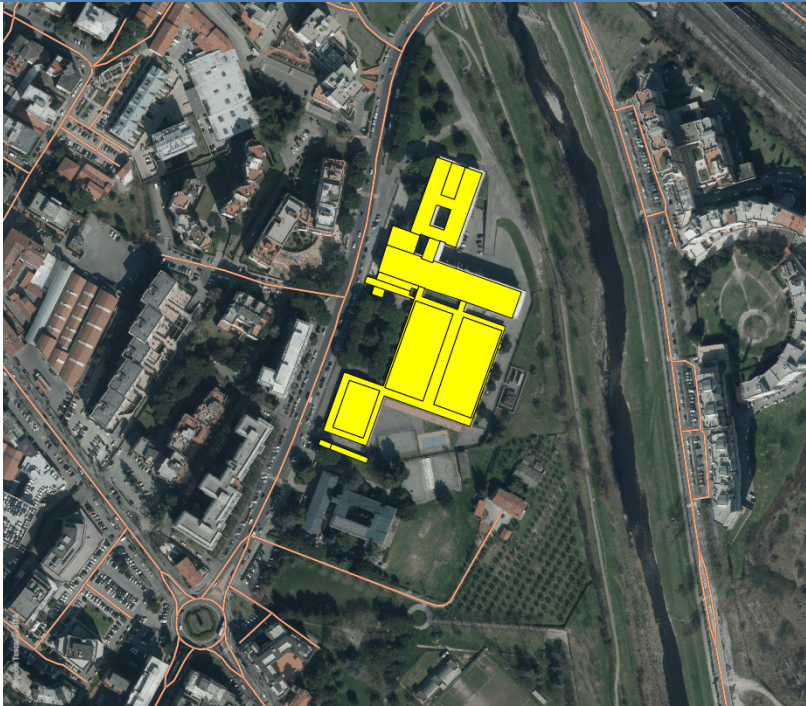


Annex 7: Characterization of the critical areas and of the noise measures foreseen: Agglomerate of Prato

| | |
|--|--|
| Edificio sensibile | Istituto Tecnico Industriale Tullio Buzzi |
| Ranking of priority | 1 |
| Sorgenti principali impattanti | Via della Repubblica |
| Traffic flow data | |
| <i>Lightweight vehicles day (06-20)</i> | 579 |
| <i>Lightweight vehicles evening (20-22)</i> | 290 |
| <i>Lightweight vehicles night (22-6)</i> | 97 |
| <i>Heavyweight vehicles day (06-20)</i> | 11 |
| <i>Heavyweight vehicles evening (20-22)</i> | 5 |
| <i>Heavyweight vehicles night (22-6)</i> | 2 |
| Critical area/special building data | |
| <i>N° residential critical buildings</i> | - |
| <i>Population inside critical buildings</i> | - |
| <i>N° schools (asili nido, scuole dell'infanzia, primaria e secondaria)</i> | 1 |
| <i>N° students, teachers and technical/administrative staff members</i> | 1523 |
| <i>N° hospitals or nursing homes (ospedali, case di cura e case di riposo)</i> | - |
| <i>N° beds and staff</i> | - |
| Greatest value of noise limits exceeds [dB(A)] | 16,0 |
| Mean value of noise limits exceeds[dB] | - |
| Data about population exposure to noise | |
| <i>N° people exposed to noise level over the limit in the diurno period</i> | 1523 |
| <i>N° people exposed to noise level over the limit in the notturno period</i> | - |
| IP value | 72998 |
| Noise measures foreseen by other plans | |
| Noise measures foreseen by the Noise Action Plan | High noise insulating window |
| Cost (rounded to the nearest hundred) | € 209.700 (standard) € 302.900 (auto-ventilating) |
|  | |

| | |
|--|---|
| Edificio sensibile | Istituto Professionale Francesco Datini |
| Ranking of priority | 2 |
| Sorgenti principali impattanti | Viale Leonardo da Vinci |
| Traffic flow data | |
| <i>Lightweight vehicles day (06-20)</i> | 1813 |
| <i>Lightweight vehicles evening (20-22)</i> | 979 |
| <i>Lightweight vehicles night (22-6)</i> | 328 |
| <i>Heavyweight vehicles day (06-20)</i> | 84 |
| <i>Heavyweight vehicles evening (20-22)</i> | 18 |
| <i>Heavyweight vehicles night (22-6)</i> | 7 |
| Critical area/special building data | |
| <i>N° residential critical buildings</i> | - |
| <i>Population inside critical buildings</i> | - |
| <i>N° schools (asili nido, scuole dell'infanzia, primaria e secondaria)</i> | 1 |
| <i>N° students, teachers and technical/administrative staff members</i> | 1598 |
| <i>N° hospitals or nursing homes (ospedali, case di cura e case di riposo)</i> | - |
| <i>N° beds and staff</i> | - |
| Greatest value of noise limits exceeds [dB(A)] | 12,4 |
| Mean value of noise limits exceeds[dB] | - |
| Data about population exposure to noise | |
| <i>N° people exposed to noise level over the limit in the diurno period</i> | 1598 |
| <i>N° people exposed to noise level over the limit in the notturno period</i> | - |
| IP value | 59351 |
| Noise measures foreseen by other plans | |
| Noise measures foreseen by the Noise Action Plan | Noise barrier and low-noise asphalt. Otherwise high noise insulation window |
| Cost (rounded to the nearest hundred) | € 261.300 (Noise barrier and low-noise asphalt) € 211.500 (Standard window) € 305.500 (Auto-ventilating window) |



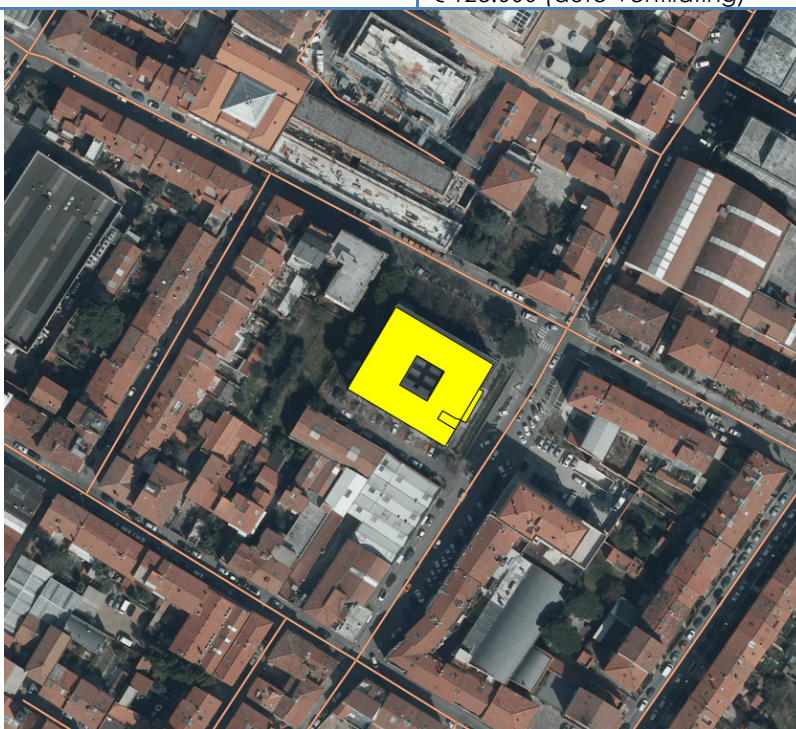
| | |
|--|--|
| Edificio sensibile | Istituto Stat. di Istruz. Tec. Gramsci - Keynes |
| Ranking of priority | 3 |
| Sorgenti principali impattanti | Viale Leonardo da Vinci |
| Traffic flow data | |
| <i>Lightweight vehicles day (06-20)</i> | 1813 |
| <i>Lightweight vehicles evening (20-22)</i> | 979 |
| <i>Lightweight vehicles night (22-6)</i> | 328 |
| <i>Heavyweight vehicles day (06-20)</i> | 84 |
| <i>Heavyweight vehicles evening (20-22)</i> | 18 |
| <i>Heavyweight vehicles night (22-6)</i> | 7 |
| Critical area/special building data | |
| <i>N° residential critical buildings</i> | - |
| <i>Population inside critical buildings</i> | - |
| <i>N° schools (asili nido, scuole dell'infanzia, primaria e secondaria)</i> | 1 |
| <i>N° students, teachers and technical/administrative staff members</i> | 978 |
| <i>N° hospitals or nursing homes (ospedali, case di cura e case di riposo)</i> | - |
| <i>N° beds and staff</i> | - |
| Greatest value of noise limits exceeds [dB(A)] | 15,9 |
| Mean value of noise limits exceeds[dB] | - |
| Data about population exposure to noise | |
| <i>N° people exposed to noise level over the limit in the diurno period</i> | 978 |
| <i>N° people exposed to noise level over the limit in the notturno period</i> | - |
| IP value | 46622 |
| Noise measures foreseen by other plans | |
| Noise measures foreseen by the Noise Action Plan | High noise insulating window |
| Cost (rounded to the nearest hundred) | € 186.300 (standard) € 259.200 (auto-ventilating) |



| | |
|--|---|
| Edificio sensibile | Istituto Tec. Comm. Dagomari |
| Ranking of priority | 4 |
| Sorgenti principali impattanti | Viale Leonardo da Vinci |
| Traffic flow data | |
| <i>Lightweight vehicles day (06-20)</i> | 1813 |
| <i>Lightweight vehicles evening (20-22)</i> | 979 |
| <i>Lightweight vehicles night (22-6)</i> | 328 |
| <i>Heavyweight vehicles day (06-20)</i> | 84 |
| <i>Heavyweight vehicles evening (20-22)</i> | 18 |
| <i>Heavyweight vehicles night (22-6)</i> | 7 |
| Critical area/special building data | |
| <i>N° residential critical buildings</i> | - |
| <i>Population inside critical buildings</i> | - |
| <i>N° schools (asili nido, scuole dell'infanzia, primaria e secondaria)</i> | 1 |
| <i>N° students, teachers and technical/administrative staff members</i> | 894 |
| <i>N° hospitals or nursing homes (ospedali, case di cura e case di riposo)</i> | - |
| <i>N° beds and staff</i> | - |
| Greatest value of noise limits exceeds [dB(A)] | 15,7 |
| Mean value of noise limits exceeds[dB] | - |
| Data about population exposure to noise | |
| <i>N° people exposed to noise level over the limit in the diurno period</i> | 894 |
| <i>N° people exposed to noise level over the limit in the notturno period</i> | - |
| IP value | 42217 |
| Noise measures foreseen by other plans | |
| Noise measures foreseen by the Noise Action Plan | High noise insulating window |
| Cost (rounded to the nearest hundred) | € 77.200 (standard) € 111.500 (auto-ventilating) |



| | |
|--|---|
| Edificio sensibile | Liceo Scientifico Carlo Livì |
| Ranking of priority | 5 |
| Sorgenti principali impattanti | Via Antonio Marini |
| Traffic flow data | |
| <i>Lightweight vehicles day (06-20)</i> | 369 |
| <i>Lightweight vehicles evening (20-22)</i> | 185 |
| <i>Lightweight vehicles night (22-6)</i> | 62 |
| <i>Heavyweight vehicles day (06-20)</i> | 4 |
| <i>Heavyweight vehicles evening (20-22)</i> | 2 |
| <i>Heavyweight vehicles night (22-6)</i> | 1 |
| Critical area/special building data | |
| <i>N° residential critical buildings</i> | - |
| <i>Population inside critical buildings</i> | - |
| <i>N° schools (asili nido, scuole dell'infanzia, primaria e secondaria)</i> | 1 |
| <i>N° students, teachers and technical/administrative staff members</i> | 725 |
| <i>N° hospitals or nursing homes (ospedali, case di cura e case di riposo)</i> | - |
| <i>N° beds and staff</i> | - |
| Greatest value of noise limits exceeds [dB(A)] | 14,1 |
| Mean value of noise limits exceeds[dB] | - |
| Data about population exposure to noise | |
| <i>N° people exposed to noise level over the limit in the diurno period</i> | 725 |
| <i>N° people exposed to noise level over the limit in the notturno period</i> | - |
| IP value | 30711 |
| Noise measures foreseen by other plans | |
| Noise measures foreseen by the Noise Action Plan | High noise insulating window |
| Cost (rounded to the nearest hundred) | € 88.600 (standard) € 128.000 (auto-ventilating) |



| | |
|--|--|
| Edificio sensibile | Scuola Sec. I grado Statale G.B.Mazzoni |
| Ranking of priority | 6 |
| Sorgenti principali impattanti | Via San Silvestro |
| Traffic flow data | |
| <i>Lightweight vehicles day (06-20)</i> | 369 |
| <i>Lightweight vehicles evening (20-22)</i> | 185 |
| <i>Lightweight vehicles night (22-6)</i> | 62 |
| <i>Heavyweight vehicles day (06-20)</i> | 4 |
| <i>Heavyweight vehicles evening (20-22)</i> | 2 |
| <i>Heavyweight vehicles night (22-6)</i> | 1 |
| Critical area/special building data | |
| <i>N° residential critical buildings</i> | - |
| <i>Population inside critical buildings</i> | - |
| <i>N° schools (asili nido, scuole dell'infanzia, primaria e secondaria)</i> | 1 |
| <i>N° students, teachers and technical/administrative staff members</i> | 462 |
| <i>N° hospitals or nursing homes (ospedali, case di cura e case di riposo)</i> | - |
| <i>N° beds and staff</i> | - |
| Greatest value of noise limits exceeds [dB(A)] | 19,0 |
| Mean value of noise limits exceeds[dB] | - |
| Data about population exposure to noise | |
| <i>N° people exposed to noise level over the limit in the diurno period</i> | 462 |
| <i>N° people exposed to noise level over the limit in the notturno period</i> | - |
| IP value | 26303 |
| Noise measures foreseen by other plans | |
| Noise measures foreseen by the Noise Action Plan | High noise insulating window |
| Cost (rounded to the nearest hundred) | € 18.400 (standard) € 26.600 (auto-ventilating) |



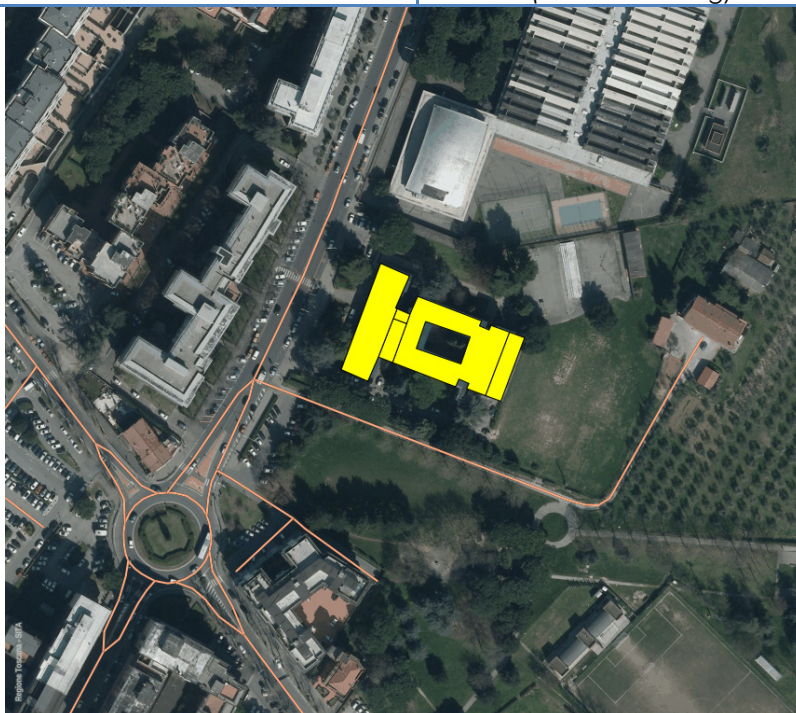
| | |
|--|--|
| Edificio sensibile | Scuola Sec. I grado Statale C. Malaparte |
| Ranking of priority | 7 |
| Sorgenti principali impattanti | Via Ferdinando Baldanzi |
| Traffic flow data | |
| <i>Lightweight vehicles day (06-20)</i> | 369 |
| <i>Lightweight vehicles evening (20-22)</i> | 185 |
| <i>Lightweight vehicles night (22-6)</i> | 62 |
| <i>Heavyweight vehicles day (06-20)</i> | 4 |
| <i>Heavyweight vehicles evening (20-22)</i> | 2 |
| <i>Heavyweight vehicles night (22-6)</i> | 1 |
| Critical area/special building data | |
| <i>N° residential critical buildings</i> | - |
| <i>Population inside critical buildings</i> | - |
| <i>N° schools (asili nido, scuole dell'infanzia, primaria e secondaria)</i> | 1 |
| <i>N° students, teachers and technical/administrative staff members</i> | 477 |
| <i>N° hospitals or nursing homes (ospedali, case di cura e case di riposo)</i> | - |
| <i>N° beds and staff</i> | - |
| Greatest value of noise limits exceeds [dB(A)] | 16,3 |
| Mean value of noise limits exceeds[dB] | - |
| Data about population exposure to noise | |
| <i>N° people exposed to noise level over the limit in the diurno period</i> | 477 |
| <i>N° people exposed to noise level over the limit in the notturno period</i> | - |
| IP value | 23257 |
| Noise measures foreseen by other plans | |
| Noise measures foreseen by the Noise Action Plan | High noise insulating window |
| Cost (rounded to the nearest hundred) | € 66.700 (standard) € 96.300 (auto-ventilating) |




| | |
|--|--|
| Edificio sensibile | Scuola Primaria Statale Ciliani |
| Ranking of priority | 8 |
| Sorgenti principali impattanti | Via Taro |
| Traffic flow data | |
| <i>Lightweight vehicles day (06-20)</i> | 210 |
| <i>Lightweight vehicles evening (20-22)</i> | 105 |
| <i>Lightweight vehicles night (22-6)</i> | 35 |
| <i>Heavyweight vehicles day (06-20)</i> | 5 |
| <i>Heavyweight vehicles evening (20-22)</i> | 2 |
| <i>Heavyweight vehicles night (22-6)</i> | 1 |
| Critical area/special building data | |
| <i>N° residential critical buildings</i> | - |
| <i>Population inside critical buildings</i> | - |
| <i>N° schools (asili nido, scuole dell'infanzia, primaria e secondaria)</i> | 1 |
| <i>N° students, teachers and technical/administrative staff members</i> | 593 |
| <i>N° hospitals or nursing homes (ospedali, case di cura e case di riposo)</i> | - |
| <i>N° beds and staff</i> | - |
| Greatest value of noise limits exceeds [dB(A)] | 12,8 |
| Mean value of noise limits exceeds[dB] | - |
| Data about population exposure to noise | |
| <i>N° people exposed to noise level over the limit in the diurno period</i> | 593 |
| <i>N° people exposed to noise level over the limit in the notturno period</i> | - |
| IP value | 22718 |
| Noise measures foreseen by other plans | |
| Noise measures foreseen by the Noise Action Plan | High noise insulating window. Otherwise Noise barrier and low-noise asphalt. |
| Cost (rounded to the nearest hundred) | € 20.200 (standard) € 29.200 (auto-ventilating) € 48.800 (Noise barrier and low-noise asphalt) |

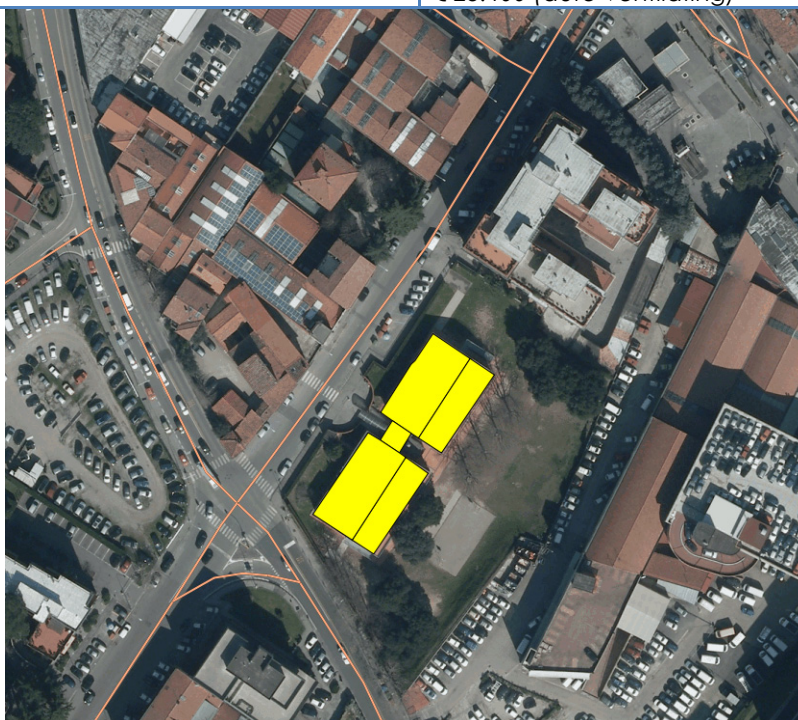


| | |
|--|--|
| Edificio sensibile | Scuola Sec. I grado Statale P.Cironi |
| Ranking of priority | 9 |
| Sorgenti principali impattanti | Viale della Repubblica |
| Traffic flow data | |
| <i>Lightweight vehicles day (06-20)</i> | 579 |
| <i>Lightweight vehicles evening (20-22)</i> | 290 |
| <i>Lightweight vehicles night (22-6)</i> | 97 |
| <i>Heavyweight vehicles day (06-20)</i> | 11 |
| <i>Heavyweight vehicles evening (20-22)</i> | 5 |
| <i>Heavyweight vehicles night (22-6)</i> | 2 |
| Critical area/special building data | |
| <i>N° residential critical buildings</i> | - |
| <i>Population inside critical buildings</i> | - |
| <i>N° schools (asili nido, scuole dell'infanzia, primaria e secondaria)</i> | 1 |
| <i>N° students, teachers and technical/administrative staff members</i> | 563 |
| <i>N° hospitals or nursing homes (ospedali, case di cura e case di riposo)</i> | - |
| <i>N° beds and staff</i> | - |
| Greatest value of noise limits exceeds [dB(A)] | 13,3 |
| Mean value of noise limits exceeds[dB] | - |
| Data about population exposure to noise | |
| <i>N° people exposed to noise level over the limit in the diurno period</i> | 563 |
| <i>N° people exposed to noise level over the limit in the notturno period</i> | - |
| IP value | 23257 |
| Noise measures foreseen by other plans | |
| Noise measures foreseen by the Noise Action Plan | High noise insulating window |
| Cost (rounded to the nearest hundred) | € 19.300 (standard) € 27.900 (auto-ventilating) |



| Edificio sensibile | |
|--|---|
| Ranking of priority | |
| Scuola Sec. I grado Statale F.Lippi 10 | |
| Sorgenti principali impattanti | Via Filippo Corridoni |
| Traffic flow data | |
| <i>Lightweight vehicles day (06-20)</i> | 310 |
| <i>Lightweight vehicles evening (20-22)</i> | 155 |
| <i>Lightweight vehicles night (22-6)</i> | 52 |
| <i>Heavyweight vehicles day (06-20)</i> | 4 |
| <i>Heavyweight vehicles evening (20-22)</i> | 2 |
| <i>Heavyweight vehicles night (22-6)</i> | 1 |
| Critical area/special building data | |
| <i>N° residential critical buildings</i> | - |
| <i>Population inside critical buildings</i> | - |
| <i>N° schools (asili nido, scuole dell'infanzia, primaria e secondaria)</i> | 1 |
| <i>N° students, teachers and technical/administrative staff members</i> | 506 |
| <i>N° hospitals or nursing homes (ospedali, case di cura e case di riposo)</i> | - |
| <i>N° beds and staff</i> | - |
| Greatest value of noise limits exceeds [dB(A)] | 13,3 |
| Mean value of noise limits exceeds[dB] | - |
| Data about population exposure to noise | |
| <i>N° people exposed to noise level over the limit in the diurno period</i> | 506 |
| <i>N° people exposed to noise level over the limit in the notturno period</i> | - |
| IP value | 19354 |
| Noise measures foreseen by other plans | |
| Noise measures foreseen by the Noise Action Plan | Noise barrier and low-noise asphalt. Otherwise high noise insulation window |
| Cost (rounded to the nearest hundred) | € 68.300 (Noise barrier and low-noise asphalt) € 82.500 (Standard window) € 119.100 (Auto-ventilating window) |
|  | |

| | |
|--|--|
| Edificio sensibile | Scuola Primaria Statale S. Gonda |
| Ranking of priority | 11 |
| Sorgenti principali impattanti | Via Santa Gonda |
| Traffic flow data | |
| <i>Lightweight vehicles day (06-20)</i> | 310 |
| <i>Lightweight vehicles evening (20-22)</i> | 155 |
| <i>Lightweight vehicles night (22-6)</i> | 52 |
| <i>Heavyweight vehicles day (06-20)</i> | 4 |
| <i>Heavyweight vehicles evening (20-22)</i> | 2 |
| <i>Heavyweight vehicles night (22-6)</i> | 1 |
| Critical area/special building data | |
| <i>N° residential critical buildings</i> | - |
| <i>Population inside critical buildings</i> | - |
| <i>N° schools (asili nido, scuole dell'infanzia, primaria e secondaria)</i> | 1 |
| <i>N° students, teachers and technical/administrative staff members</i> | 431 |
| <i>N° hospitals or nursing homes (ospedali, case di cura e case di riposo)</i> | - |
| <i>N° beds and staff</i> | - |
| Greatest value of noise limits exceeds [dB(A)] | 14,0 |
| Mean value of noise limits exceeds[dB] | - |
| Data about population exposure to noise | |
| <i>N° people exposed to noise level over the limit in the diurno period</i> | 431 |
| <i>N° people exposed to noise level over the limit in the notturno period</i> | - |
| IP value | 18060 |
| Noise measures foreseen by other plans | |
| Noise measures foreseen by the Noise Action Plan | High noise insulating window |
| Cost (rounded to the nearest hundred) | € 17.600 (standard) € 25.400 (auto-ventilating) |



| Edificio sensibile | Liceo Convitto Cicognini |
|--|--|
| Ranking of priority | 12 |
| Sorgenti principali impattanti | Piazza del Collegio |
| Traffic flow data | |
| <i>Lightweight vehicles day (06-20)</i> | 210 |
| <i>Lightweight vehicles evening (20-22)</i> | 105 |
| <i>Lightweight vehicles night (22-6)</i> | 35 |
| <i>Heavyweight vehicles day (06-20)</i> | 5 |
| <i>Heavyweight vehicles evening (20-22)</i> | 3 |
| <i>Heavyweight vehicles night (22-6)</i> | 1 |
| Critical area/special building data | |
| <i>N° residential critical buildings</i> | - |
| <i>Population inside critical buildings</i> | - |
| <i>N° schools (asili nido, scuole dell'infanzia, primaria e secondaria)</i> | 1 |
| <i>N° students, teachers and technical/administrative staff members</i> | 342 |
| <i>N° hospitals or nursing homes (ospedali, case di cura e case di riposo)</i> | - |
| <i>N° beds and staff</i> | - |
| Greatest value of noise limits exceeds [dB(A)] | 17,0 |
| Mean value of noise limits exceeds[dB] | - |
| Data about population exposure to noise | |
| <i>N° people exposed to noise level over the limit in the diurno period</i> | 342 |
| <i>N° people exposed to noise level over the limit in the notturno period</i> | - |
| IP value | 17438 |
| Noise measures foreseen by other plans | |
| Noise measures foreseen by the Noise Action Plan | High noise insulating window |
| Cost (rounded to the nearest hundred) | € 64.900 (standard) € 93.800 (auto-ventilating) |



| | |
|--|---|
| Edificio sensibile | Scuola Sec. I grado Statale Convenevole da Prato |
| Ranking of priority | 13 |
| Sorgenti principali impattanti | Via Due Giugno |
| Traffic flow data | |
| <i>Lightweight vehicles day (06-20)</i> | 210 |
| <i>Lightweight vehicles evening (20-22)</i> | 105 |
| <i>Lightweight vehicles night (22-6)</i> | 35 |
| <i>Heavyweight vehicles day (06-20)</i> | 5 |
| <i>Heavyweight vehicles evening (20-22)</i> | 13 |
| <i>Heavyweight vehicles night (22-6)</i> | 1 |
| Critical area/special building data | |
| <i>N° residential critical buildings</i> | - |
| <i>Population inside critical buildings</i> | - |
| <i>N° schools (asili nido, scuole dell'infanzia, primaria e secondaria)</i> | 1 |
| <i>N° students, teachers and technical/administrative staff members</i> | 417 |
| <i>N° hospitals or nursing homes (ospedali, case di cura e case di riposo)</i> | - |
| <i>N° beds and staff</i> | - |
| Greatest value of noise limits exceeds [dB(A)] | 13,9 |
| Mean value of noise limits exceeds[dB] | - |
| Data about population exposure to noise | |
| <i>N° people exposed to noise level over the limit in the diurno period</i> | 417 |
| <i>N° people exposed to noise level over the limit in the notturno period</i> | - |
| IP value | 17429 |
| Noise measures foreseen by other plans | |
| Noise measures foreseen by the Noise Action Plan | High noise insulating window |
| Cost (rounded to the nearest hundred) | € 103.500 (standard) € 149.600 (auto-ventilating) |



| Edificio sensibile | Liceo Classico Cicognini |
|--|---|
| Ranking of priority | 14 |
| Sorgenti principali impattanti | Via Ferdinando Baldanzi |
| Traffic flow data | |
| <i>Lightweight vehicles day (06-20)</i> | 369 |
| <i>Lightweight vehicles evening (20-22)</i> | 185 |
| <i>Lightweight vehicles night (22-6)</i> | 62 |
| <i>Heavyweight vehicles day (06-20)</i> | 4 |
| <i>Heavyweight vehicles evening (20-22)</i> | 2 |
| <i>Heavyweight vehicles night (22-6)</i> | 1 |
| Critical area/special building data | |
| <i>N° residential critical buildings</i> | - |
| <i>Population inside critical buildings</i> | - |
| <i>N° schools (asili nido, scuole dell'infanzia, primaria e secondaria)</i> | 1 |
| <i>N° students, teachers and technical/administrative staff members</i> | 359 |
| <i>N° hospitals or nursing homes (ospedali, case di cura e case di riposo)</i> | - |
| <i>N° beds and staff</i> | - |
| Greatest value of noise limits exceeds [dB(A)] | 14,8 |
| Mean value of noise limits exceeds[dB] | - |
| Data about population exposure to noise | |
| <i>N° people exposed to noise level over the limit in the diurno period</i> | 359 |
| <i>N° people exposed to noise level over the limit in the notturno period</i> | - |
| IP value | 15960 |
| Noise measures foreseen by other plans | |
| Noise measures foreseen by the Noise Action Plan | High noise insulating window |
| Cost (rounded to the nearest hundred) | € 75.500 (standard) € 109.000 (auto-ventilating) |



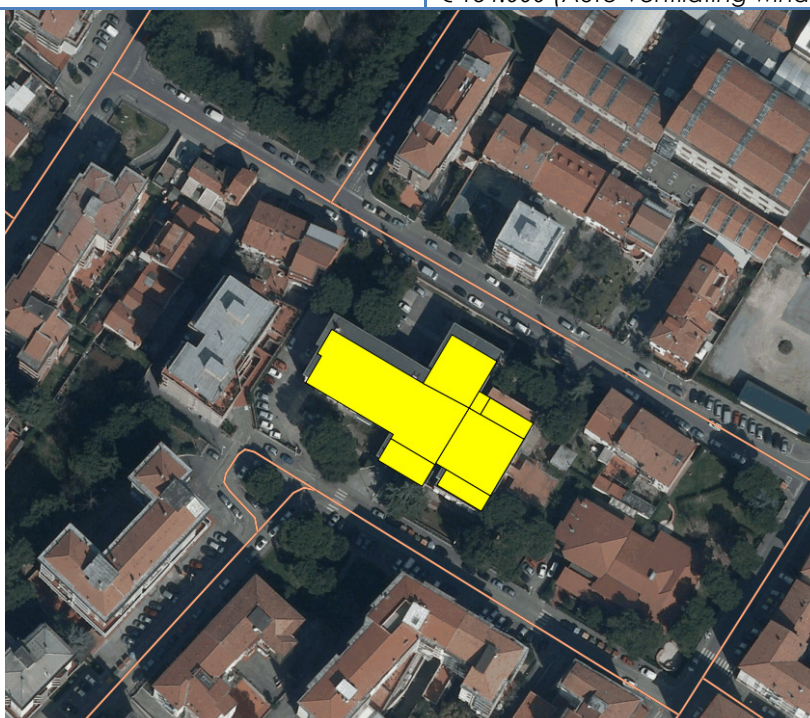
| | |
|--|--|
| Edificio sensibile | Scuola Infanzia Statale Villa Charitas |
| Ranking of priority | 15 |
| Sorgenti principali impattanti | Via del Ceppo vecchio |
| Traffic flow data | |
| <i>Lightweight vehicles day (06-20)</i> | 369 |
| <i>Lightweight vehicles evening (20-22)</i> | 185 |
| <i>Lightweight vehicles night (22-6)</i> | 62 |
| <i>Heavyweight vehicles day (06-20)</i> | 4 |
| <i>Heavyweight vehicles evening (20-22)</i> | 2 |
| <i>Heavyweight vehicles night (22-6)</i> | 1 |
| Critical area/special building data | |
| <i>N° residential critical buildings</i> | - |
| <i>Population inside critical buildings</i> | - |
| <i>N° schools (asili nido, scuole dell'infanzia, primaria e secondaria)</i> | 1 |
| <i>N° students, teachers and technical/administrative staff members</i> | 255 |
| <i>N° hospitals or nursing homes (ospedali, case di cura e case di riposo)</i> | - |
| <i>N° beds and staff</i> | - |
| Greatest value of noise limits exceeds [dB(A)] | 15,0 |
| Mean value of noise limits exceeds[dB] | - |
| Data about population exposure to noise | |
| <i>N° people exposed to noise level over the limit in the diurno period</i> | 255 |
| <i>N° people exposed to noise level over the limit in the notturno period</i> | - |
| IP value | 11444 |
| Noise measures foreseen by other plans | |
| Noise measures foreseen by the Noise Action Plan | High noise insulating window |
| Cost (rounded to the nearest hundred) | € 67.600 (standard) € 97.600 (auto-ventilating) |



| Edificio sensibile | Scuola Primaria Statale C.Guasti |
|--|--|
| Ranking of priority | 16 |
| Sorgenti principali impattanti | Via Santa Caterina |
| Traffic flow data | |
| <i>Lightweight vehicles day (06-20)</i> | 210 |
| <i>Lightweight vehicles evening (20-22)</i> | 105 |
| <i>Lightweight vehicles night (22-6)</i> | 35 |
| <i>Heavyweight vehicles day (06-20)</i> | 5 |
| <i>Heavyweight vehicles evening (20-22)</i> | 3 |
| <i>Heavyweight vehicles night (22-6)</i> | 1 |
| Critical area/special building data | |
| <i>N° residential critical buildings</i> | - |
| <i>Population inside critical buildings</i> | - |
| <i>N° schools (asili nido, scuole dell'infanzia, primaria e secondaria)</i> | 1 |
| <i>N° students, teachers and technical/administrative staff members</i> | 255 |
| <i>N° hospitals or nursing homes (ospedali, case di cura e case di riposo)</i> | - |
| <i>N° beds and staff</i> | - |
| Greatest value of noise limits exceeds [dB(A)] | 11,5 |
| Mean value of noise limits exceeds[dB] | - |
| Data about population exposure to noise | |
| <i>N° people exposed to noise level over the limit in the diurno period</i> | 255 |
| <i>N° people exposed to noise level over the limit in the notturno period</i> | - |
| IP value | 11442 |
| Noise measures foreseen by other plans | |
| Noise measures foreseen by the Noise Action Plan | Noise barrier and low-noise asphalt. Otherwise high noise insulation window |
| Cost (rounded to the nearest hundred) | € 58.500 (Noise barrier and low-noise asphalt) € 46.500 (Standard window) € 67.200 (Auto-ventilating window) |



| | |
|--|--|
| Edificio sensibile | Scuola Primaria Statale Borgonuovo |
| Ranking of priority | 17 |
| Sorgenti principali impattanti | Via Muzio Clementi |
| Traffic flow data | |
| <i>Lightweight vehicles day (06-20)</i> | 210 |
| <i>Lightweight vehicles evening (20-22)</i> | 105 |
| <i>Lightweight vehicles night (22-6)</i> | 35 |
| <i>Heavyweight vehicles day (06-20)</i> | 5 |
| <i>Heavyweight vehicles evening (20-22)</i> | 3 |
| <i>Heavyweight vehicles night (22-6)</i> | 1 |
| Critical area/special building data | |
| <i>N° residential critical buildings</i> | - |
| <i>Population inside critical buildings</i> | - |
| <i>N° schools (asili nido, scuole dell'infanzia, primaria e secondaria)</i> | 1 |
| <i>N° students, teachers and technical/administrative staff members</i> | 369 |
| <i>N° hospitals or nursing homes (ospedali, case di cura e case di riposo)</i> | - |
| <i>N° beds and staff</i> | - |
| Greatest value of noise limits exceeds [dB(A)] | 9,8 |
| Mean value of noise limits exceeds[dB] | - |
| Data about population exposure to noise | |
| <i>N° people exposed to noise level over the limit in the diurno period</i> | 369 |
| <i>N° people exposed to noise level over the limit in the notturno period</i> | - |
| IP value | 10890 |
| Noise measures foreseen by other plans | |
| Noise measures foreseen by the Noise Action Plan | Noise barrier. Otherwise high noise insulation window |
| Cost (rounded to the nearest hundred) | € 108.000 (Noise barrier) € 93.000 (Standard window) € 134.000 (Auto-ventilating window) |



| | |
|--|--|
| Edificio sensibile | Scuola Infanzia Paritaria S. Giuseppe |
| Ranking of priority | 18 |
| Sorgenti principali impattanti | Via Andrea Della Robbia |
| Traffic flow data | |
| <i>Lightweight vehicles day (06-20)</i> | 210 |
| <i>Lightweight vehicles evening (20-22)</i> | 105 |
| <i>Lightweight vehicles night (22-6)</i> | 35 |
| <i>Heavyweight vehicles day (06-20)</i> | 5 |
| <i>Heavyweight vehicles evening (20-22)</i> | 3 |
| <i>Heavyweight vehicles night (22-6)</i> | 1 |
| Critical area/special building data | |
| <i>N° residential critical buildings</i> | - |
| <i>Population inside critical buildings</i> | - |
| <i>N° schools (asili nido, scuole dell'infanzia, primaria e secondaria)</i> | 1 |
| <i>N° students, teachers and technical/administrative staff members</i> | 184 |
| <i>N° hospitals or nursing homes (ospedali, case di cura e case di riposo)</i> | - |
| <i>N° beds and staff</i> | - |
| Greatest value of noise limits exceeds [dB(A)] | 17,1 |
| Mean value of noise limits exceeds[dB] | - |
| Data about population exposure to noise | |
| <i>N° people exposed to noise level over the limit in the diurno period</i> | 184 |
| <i>N° people exposed to noise level over the limit in the notturno period</i> | - |
| IP value | 9431 |
| Noise measures foreseen by other plans | |
| Noise measures foreseen by the Noise Action Plan | High noise insulating window |
| Cost (rounded to the nearest hundred) | € 38.600 (standard) € 55.800 (auto-ventilating) |



| | |
|--|--|
| Edificio sensibile | Scuola Primaria Paritaria Conservatorio S.Niccolò |
| Ranking of priority | 19 |
| Sorgenti principali impattanti | Piazza Cardinale Niccolò' |
| Traffic flow data | |
| <i>Lightweight vehicles day (06-20)</i> | 210 |
| <i>Lightweight vehicles evening (20-22)</i> | 105 |
| <i>Lightweight vehicles night (22-6)</i> | 35 |
| <i>Heavyweight vehicles day (06-20)</i> | 5 |
| <i>Heavyweight vehicles evening (20-22)</i> | 3 |
| <i>Heavyweight vehicles night (22-6)</i> | 1 |
| Critical area/special building data | |
| <i>N° residential critical buildings</i> | - |
| <i>Population inside critical buildings</i> | - |
| <i>N° schools (asili nido, scuole dell'infanzia, primaria e secondaria)</i> | 1 |
| <i>N° students, teachers and technical/administrative staff members</i> | 178 |
| <i>N° hospitals or nursing homes (ospedali, case di cura e case di riposo)</i> | - |
| <i>N° beds and staff</i> | - |
| Greatest value of noise limits exceeds [dB(A)] | 17,4 |
| Mean value of noise limits exceeds[dB] | - |
| Data about population exposure to noise | |
| <i>N° people exposed to noise level over the limit in the diurno period</i> | 178 |
| <i>N° people exposed to noise level over the limit in the notturno period</i> | - |
| IP value | 9280 |
| Noise measures foreseen by other plans | |
| Noise measures foreseen by the Noise Action Plan | High noise insulating window |
| Cost (rounded to the nearest hundred) | € 14.900 (standard) € 21.500 (auto-ventilating) |



| | |
|--|--|
| Edificio sensibile | R.S.A Pio Istituto S. Caterina De' Ricci |
| Ranking of priority | 20 |
| Sorgenti principali impattanti | Via San Vincenzo |
| Traffic flow data | |
| <i>Lightweight vehicles day (06-20)</i> | 210 |
| <i>Lightweight vehicles evening (20-22)</i> | 105 |
| <i>Lightweight vehicles night (22-6)</i> | 35 |
| <i>Heavyweight vehicles day (06-20)</i> | 5 |
| <i>Heavyweight vehicles evening (20-22)</i> | 3 |
| <i>Heavyweight vehicles night (22-6)</i> | 1 |
| Critical area/special building data | |
| <i>N° residential critical buildings</i> | - |
| <i>Population inside critical buildings</i> | - |
| <i>N° schools (asili nido, scuole dell'infanzia, primaria e secondaria)</i> | - |
| <i>N° students, teachers and technical/administrative staff members</i> | - |
| <i>N° hospitals or nursing homes (ospedali, case di cura e case di riposo)</i> | 1 |
| <i>N° beds and staff</i> | 107 |
| Greatest value of noise limits exceeds [dB(A)] | 21,0 |
| Mean value of noise limits exceeds[dB] | - |
| Data about population exposure to noise | |
| <i>N° people exposed to noise level over the limit in the diurno period</i> | 107 |
| <i>N° people exposed to noise level over the limit in the notturno period</i> | 107 |
| IP value | 8976 |
| Noise measures foreseen by other plans | |
| Noise measures foreseen by the Noise Action Plan | High noise insulating window |
| Cost (rounded to the nearest hundred) | € 4.400 (standard) € 6.400 (auto-ventilating) |

